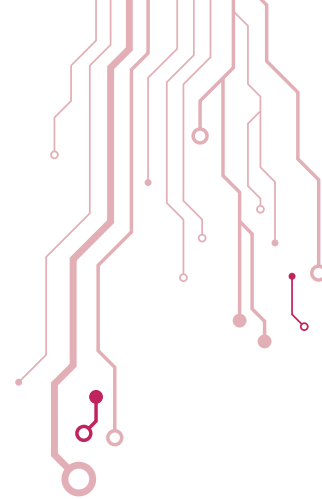


NC1 and NC2 Contactors

9A ~ 630A

- Electric rating; AC50/60Hz, up to 690V until 95A, 1000V up to 630A
- Application: remote making and breaking circuits; protect circuit from overload relay
- Utilization category : AC-1, AC-3, AC-4
- Ambient temperature : -5°C ~ +40°C
- Altitude: <2000m
- Mounting category III
- Mounting conditions: Inclination between the mounting plane and the vertical plane not exceeding $\pm 5^\circ$



AC Magnetic Contactors (3 Pole)

| Code | Rated Current | | Inrush Current | Rating @415v | Aux Contacts |
|----------|---------------|------|----------------|--------------|--------------|
| | AC3 | AC1 | | | |
| NC1-0910 | 9A | 20A | 70VA | 4kW | 1NO |
| NC1-0901 | 9A | 20A | 70VA | 4kW | 1NC |
| NC1-1210 | 12A | 25A | 70VA | 5,5kW | 1NO |
| NC1-1201 | 12A | 25A | 70VA | 5,5kW | 1NC |
| NC1-1810 | 18A | 32A | 70VA | 7,5kW | 1NO |
| NC1-1801 | 18A | 32A | 70VA | 7,5kW | 1NC |
| NC1-2510 | 25A | 40A | 110VA | 11kW | 1NO |
| NC1-2501 | 25A | 40A | 110VA | 11kW | 1NC |
| NC1-3210 | 32A | 50A | 110VA | 15kW | 1NO |
| NC1-3201 | 32A | 50A | 110VA | 15kW | 1NC |
| NC1-4011 | 40A | 60A | 200VA | 18,5kW | 1NO+1NC |
| NC1-5011 | 50A | 80A | 200VA | 22kW | 1NO+1NC |
| NC1-6511 | 65A | 80A | 200VA | 30kW | 1NO+1NC |
| NC1-8011 | 80A | 125A | 200VA | 37kW | 1NO+1NC |
| NC1-9511 | 95A | 125A | 200VA | 45kW | 1NO+1NC |
| NC2-115 | 115A | 200A | 660VA | 55kW | ADDITIONAL |
| NC2-150 | 150A | 200A | 660VA | 75kW | ADDITIONAL |
| NC2-185 | 185A | 275A | 966VA | 90kW | ADDITIONAL |
| NC2-225 | 225A | 275A | 966VA | 110kW | ADDITIONAL |
| NC2-265 | 265A | 315A | 840VA | 132kW | ADDITIONAL |
| NC2-330 | 330A | 380A | 1500VA | 160kW | ADDITIONAL |
| NC2-400 | 400A | 450A | 1500VA | 220kW | ADDITIONAL |
| NC2-500 | 500A | 630A | 1500VA | 275kW | ADDITIONAL |
| NC2-630 | 630A | 800A | 1500VA | 375kW | ADDITIONAL |



NC1-25



NC1-6511



NC2-185